



iVMS-4200 V2.4.1.3

2015-12-30

iVMS-4200 V2.4.1.3 Release Notes

General Information

Software Version	V2.4.1.3 build20151216
Network SDK Lib	V5.1.5.8 build20151203
Play Lib	V7.3.0.43 build20151216
VCA Config Lib	V3.3.3.3 build20151130
Remote Config Lib	V4.1.0.4 build20151215
SADP Lib	V4.1.0.2 build20150901

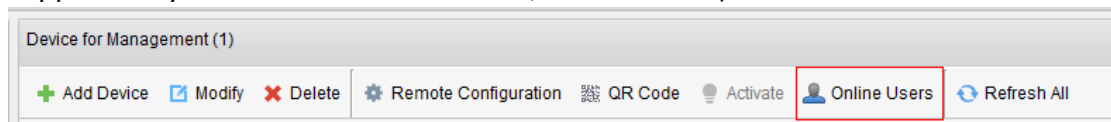
Supported devices:

Front-end and back-end products: released before the end of October, 2015.

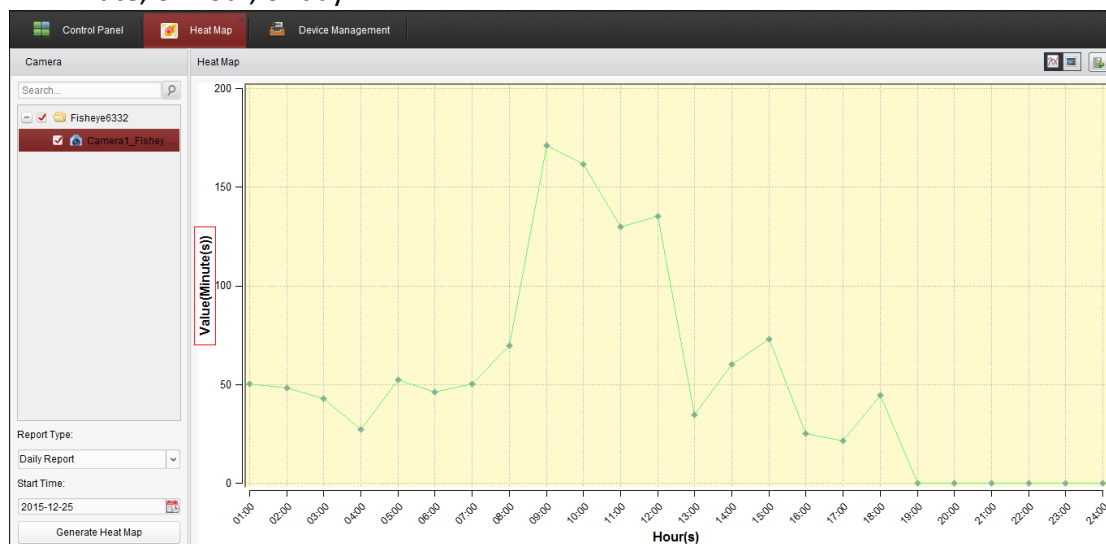
Video intercom products: v1.1, v1.2, v1.2.1

V2.4.1.3 Key Updates

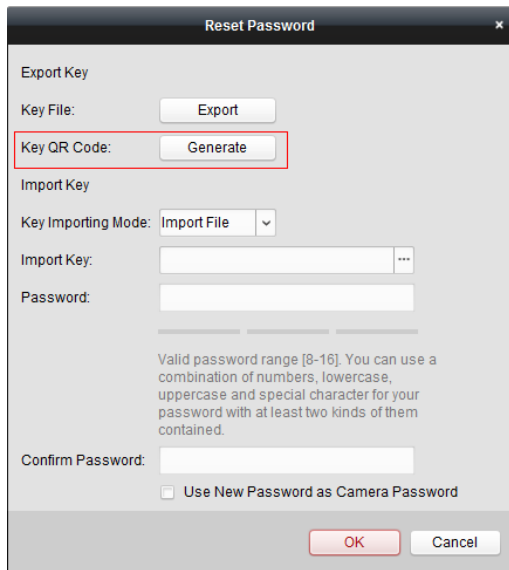
1. Add the Online Users check function in Device Management. (Need to be supported by the device: non-iDS R3 IPC, R4 IPC V5.3.6)



2. Change the heat value unit in heat mapping to time, displaying as second, or minute, or hour, or day.



3. Add the Key QR Code generating function when resetting password in the SADP module.



Reset Password

Export Key

Key File:

Key QR Code:

Import Key

Key Importing Mode:

Import Key:

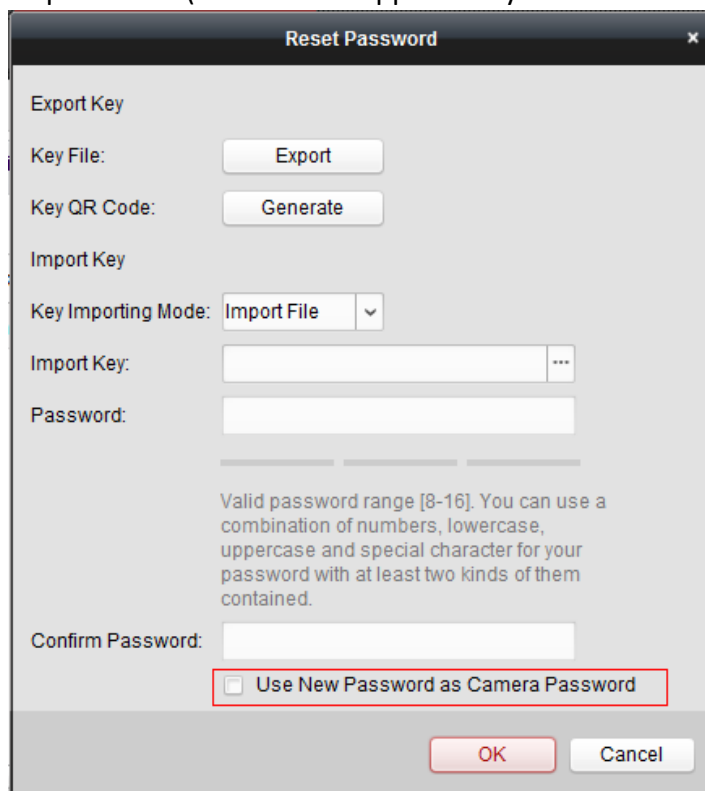
Password:

Valid password range [8-16]. You can use a combination of numbers, lowercase, uppercase and special character for your password with at least two kinds of them contained.

Confirm Password:

☐ Use New Password as Camera Password

4. Use the NVR's password as the IPC's if necessary when resetting the NVR's password. (Need to be supported by the NVR: NVR V3.4.0)



Reset Password

Export Key

Key File:

Key QR Code:

Import Key

Key Importing Mode:

Import Key:

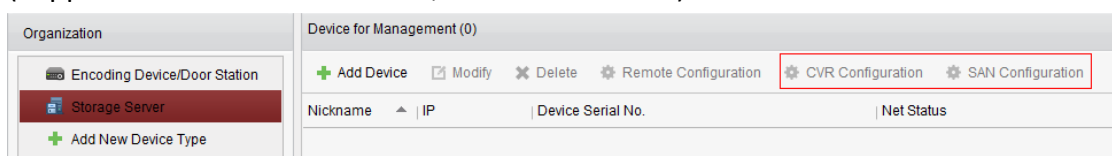
Password:

Valid password range [8-16]. You can use a combination of numbers, lowercase, uppercase and special character for your password with at least two kinds of them contained.

Confirm Password:

☐ Use New Password as Camera Password

5. Add one-touch CVR configuration and one-touch SAN configuration of CVR devices. (Supported devices: DS-A81016S, DS-A82024D V1.1)



Organization

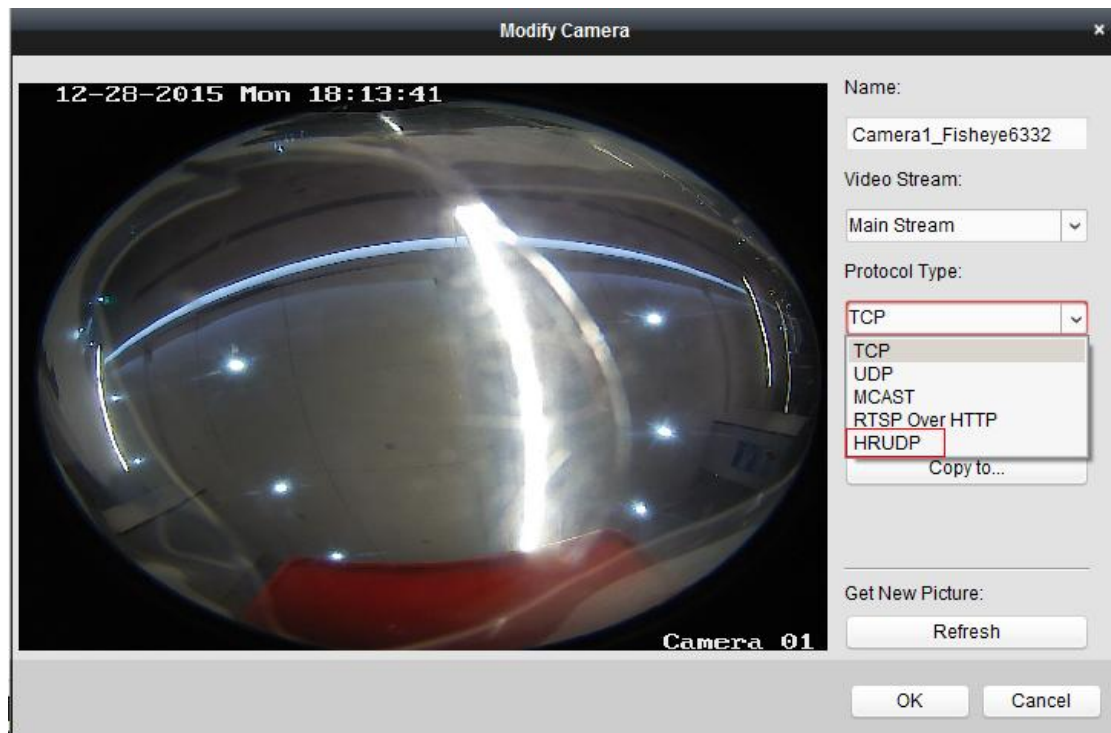
- Encoding Device/Door Station
- Storage Server
- + Add New Device Type

Device for Management (0)

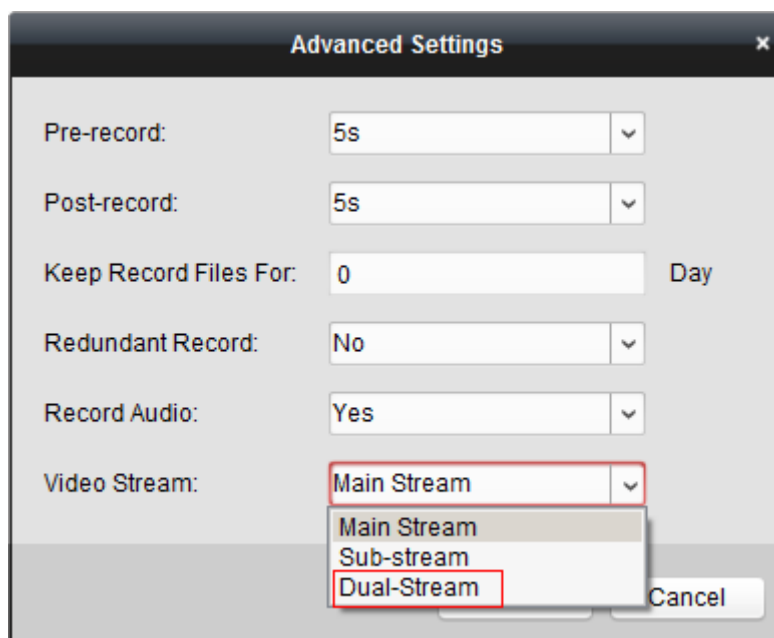
+ Add Device ☒ Modify ☒ Delete ☒ Remote Configuration ☒ CVR Configuration ☒ SAN Configuration

Nickname	IP	Device Serial No.	Net Status

6. Support the protocol type HRUDP. (Need to be supported by device: NVR V3.4.0)
Path: Device Management – Group - Modify



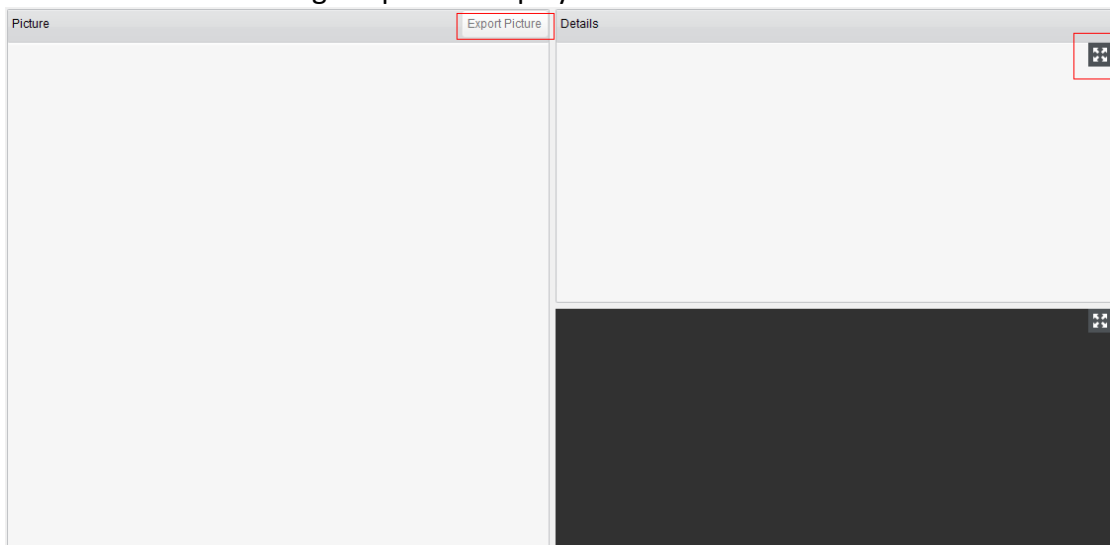
7. Support recording in dual streams. (Need to be supported by device: Turbo DVR V3.3.0)
Path: Storage Schedule – Advanced Settings:



8. Support CVR alarm message (DS-A81016S).
9. Support two adding methods for security control panel devices: IP Server and

HiDDNS.

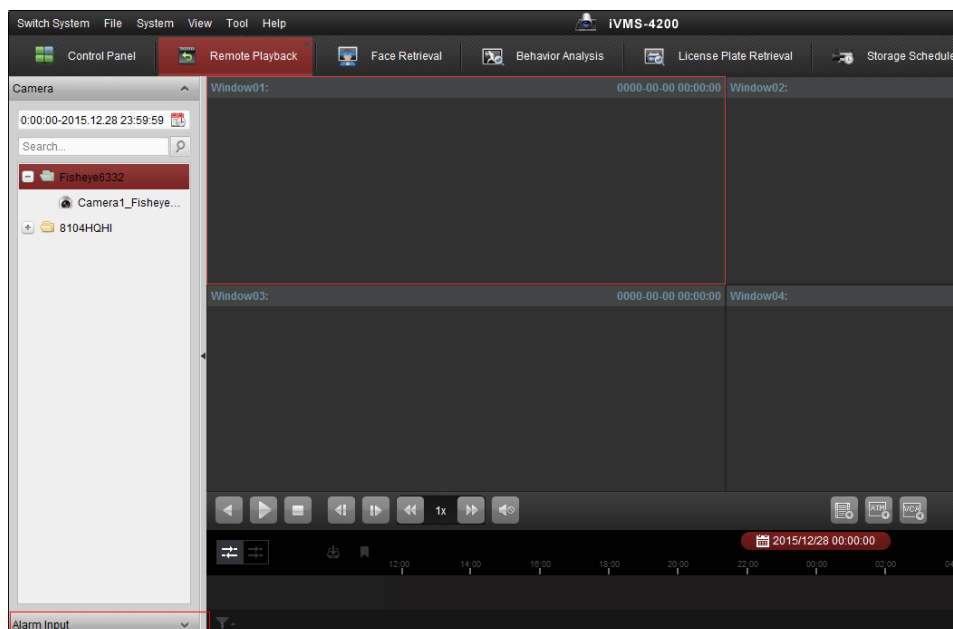
10. In License Plate Retrieval, Face Retrieval, and Behavior Analysis, add Export Picture function and original picture display function.

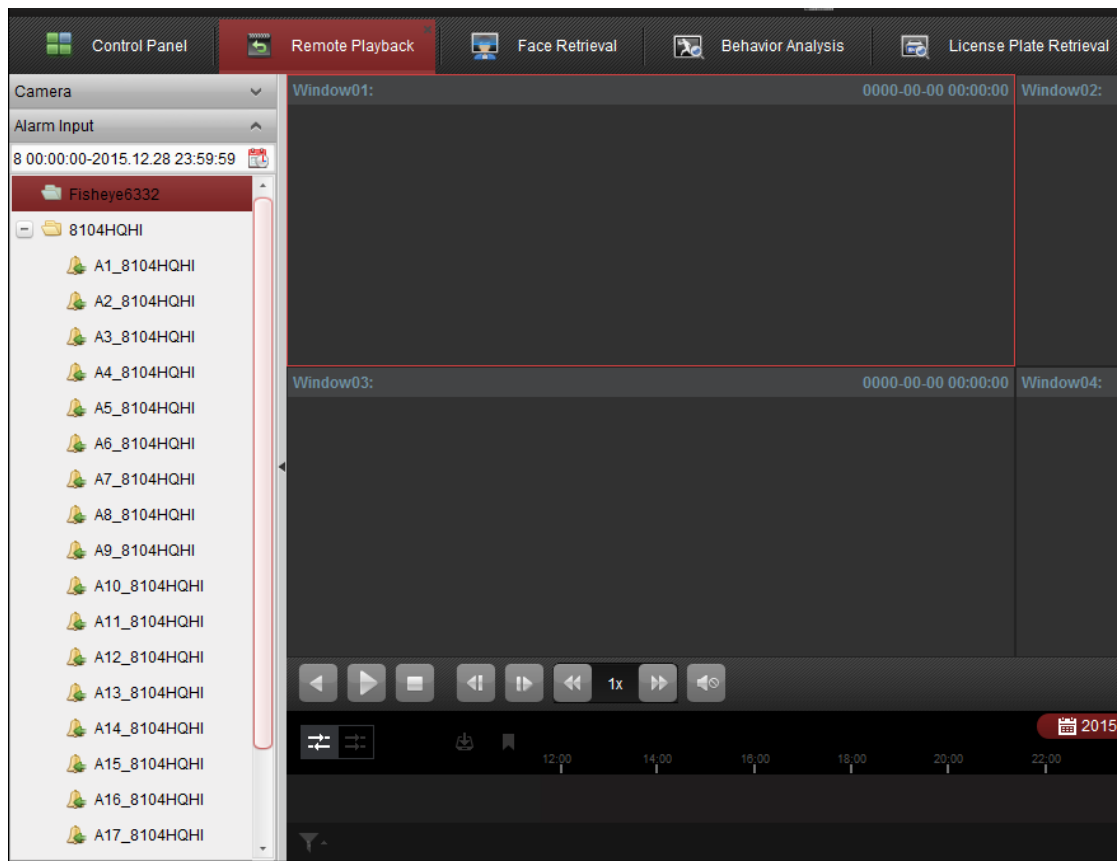


11. Remove the 4200 web client.

[NOTE] Only new installation of the iVMS-4200 V2.4.1.3 will remove the web client. If directly updated from the previous version with web client function enabled, the iVMS-4200 V2.4.1.3 will still have the web client function.

12. Add alarm input triggered recording playback in Remote Playback.





13. Maximum supported number of video intercom products change: 16 door stations, and 512 indoor stations/master stations.
14. Support multi-language. 29 languages are supported: Chinese, English, Bulgarian, Hungarian, Greece, German, Italian, Czech, Slovak, French, Polish, Dutch, Portuguese, Spanish, Romanian, Danish, Swedish, Norwegian, Finnish, Croatian, Slovenia, Serbian, Vietnamese, Turkish, Traditional Chinese, Thai, Japanese, Korean and Russian.