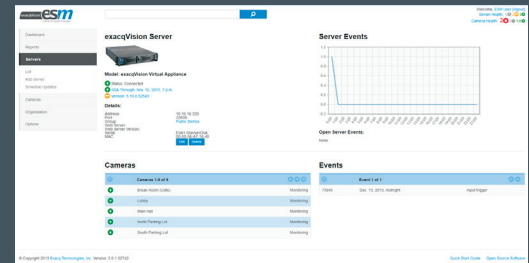


Enterprise System Manager (ESM)

Minimizes Downtime of exacqVision Servers



Servers 1-2 of 2			
exacqVision Database Server	Connected		
exacqVision Storage Server	Connected		
exacqVision Video Server	Connected		
Camera 1-6 of 17			
Camera 1	Monitoring		
Camera 2	Monitoring		
Camera 3	Monitoring		
Camera 4	Monitoring		
Camera 5	Monitoring		
Camera 6	Monitoring		
Unacknowledged Events 1-10 of 182			
73889	12/15/2013 09:00:00 AM	Soft trigger	exacqVision Video Server - Camera Disconnected
73423	12/12/2013 05:07:26 PM	Soft trigger	exacqVision Video Server - Soft Trigger 9
73422	12/12/2013 05:07:26 PM	Soft trigger	exacqVision Video Server - Hard Soft Trigger
73421	12/12/2013 05:07:26 PM	Soft trigger	exacqVision Video Server - Camera Disconnected
73420	12/12/2013 05:07:26 PM	Soft trigger	exacqVision Video Server - RTSP
73419	12/12/2013 05:07:26 PM	Soft trigger	exacqVision Video Server - 25.7% Network Video
73418	12/12/2013 05:07:26 PM	Soft trigger	exacqVision Video Server - Real A/D
73417	12/12/2013 05:07:18 PM	Soft trigger	exacqVision Video Server - Real A/D
73416	12/12/2013 05:07:18 PM	Soft trigger	exacqVision Video Server - Sample Trigger ACT1/5
73386	12/12/2013 05:15:45 PM	Update Success	exacqVision Storage Server

• Maximize Uptime of exacqVision Enterprise Recorders

- Intuitive dashboard for constant server health monitoring
- Receive e-mails for immediate notification of system errors and warnings

• Assess Health Instantly From Anywhere

- Visually confirm the health of all exacqVision recorders on the intuitive dashboard
- Access the ESM interface from a PC browser, tablet or smartphone

• Increases Reliability with Automatic Failover

- Continually monitors all recorders to immediately detect a failure
- Ensure video continues to record even when hardware fails
- Automatically transfers failed recorder duties back to primary recorder
- Manually failover recorders at any time for system maintenance

• Create Highly Flexible E-mail Notifications

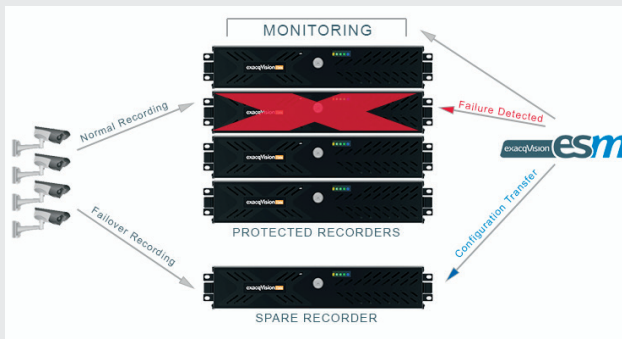
- Configure more than 25 selectable errors and warnings:
 - VMS recorder offline
 - Storage warnings
 - Drive failure
 - Temperature alarm
 - Camera disconnected
- Alarm inputs/outputs
- Receive real-time e-mails to send to individuals or groups of users
- Automatic notification of critical problems

• Reduce Software Maintenance Time

- Schedule software updates during non-peak hours
- Minimize business interruptions by planning maintenance
- Plan software updates to hundreds or thousands of servers within minutes

• Monitor Camera Health

- Confirm cameras are running correctly
- Receive notification when a camera is disconnected
- Ensure cameras are positioned properly



CAPACITY, FEATURES & LICENSING

Required ESM License	One EVESM
Required Recorder License	exacqVision Enterprise with current SSA
Recorder Hardware Monitoring	exacqVision recorders
Recorder Software Monitoring	exacqVision recorders and third-party recorders
Camera Monitoring	exacqVision recorders and third-party recorders
Maximum Monitored Recorders	1,500
Maximum Concurrent Clients	50

MINIMUM SERVER REQUIREMENTS

Typically monitors less than 50 servers with up to 5 simultaneous client connections

Processor	Intel® i3-4100 or better
RAM	8 GB minimum
Storage	100 GB SSD
Network	25 Kbps per video recorder, plus 512 Kbps per simultaneous client connection
Operating System	Windows 7 or Server 2008 R2, Ubuntu 10.04 Linux (64 bit or 32 bit with PAE)

RECOMMENDED SERVER REQUIREMENTS

Typically monitors 500 or more servers with 25 simultaneous client connections

Processor	Intel® E3-1275 Xeon or better
RAM	16 GB (32 GB recommended for > 1,000 recorders)
Storage	250 GB SSD
Network	50 Kbps average, 1 Mbps peak per video server
Operating System	Windows 8 or Server 2012, Ubuntu 12.04 Linux
E-mail Host	SMTP e-mail server

PC CLIENT REQUIREMENTS

Processor	Intel® Atom Z3470 or better
RAM	1 GB Minimum
Network	256 Kbps minimum, 2 Mbps recommended for live video streaming
Browser	IE 9, Chrome 31, Safari 7, Mozilla Firefox 25

MOBILE CLIENT REQUIREMENTS

Compatibility	iOS or Android phones and tablets with Chrome 31 or Safari 7 or better
Network	128 Kbps minimum, 1 Mbps recommended with live video
Browser	Microsoft® IE for Mobile, Google Chrome, Safari

Related Products



exacqVision Enterprise VMS

exacqVision hybrid & IP camera servers

www.exacq.com