

ACCESSORIES FOR STAINLESS STEEL CAMERAS AND HOUSINGS

ONXAB2 AIR BARRIER

Made of AISI 316L electropolished stainless steel

Suggested pressure: 1Bar

Supplied with NXW housing and optional on NXM



ONXAB2

NXFIGRU AIR FILTERING GROUP

To be combined with ONXAB2 air barrier to clean the air from oil and water particles, generally coming from the compressor

Filtering of particles with diameter higher than 0.2 micron

Operating pressure 0.3÷2.5 BAR



NXFIGRU

VIPNX WIPER FOR HOUSING

Made of AISI 316L electropolished stainless steel

IP66/IP67

Different voltages available, 230Vac or 24Vac, both 50/60Hz

Connector 3+1 poles, easy wiring harness

Easy installation on NXM36, NXM and NXL housings



VIPNX

TECHNICAL DATA**ONXAB2 AIR BARRIER**

Dimensions (Ø): 154x21mm (6x0.8in)

Male input 1/2" GAS

Max pressure 2.5 Bar, application example:

- air pressure 1 Bar, consumption 7m³/h
- air pressure 1.5 Bar, consumption 10m³/h
- air pressure 2 Bar, consumption 12m³/h
- air pressure 2.5 Bar, consumption 14m³/h

Unit weight: 1.6kg (3.5lb)

NXFIGRU AIR FILTERING GROUP

3 filters in cascade (20micron, 5micron, 0.1micron)

Dimensions: 227x275x104mm (8.9x10.8x4in)

Female input and output: 1/2" GAS

Suggested pressure: 0.3-2.5Bar

Filtering: 0.1micron

Unit weight: 2.5kg (5.5lb)

VIPNX WIPER FOR HOUSING

Wiperblade and enclosure constructed from AISI 316L stainless steel

Dimensions (ØxL): 100x169mm (not comprehensive of blade)

Unit weight: 1.7kg (3.7lb)

Connector 3+1 pins

IN 230Vac, consumption 7W max

IN 24Vac, consumption 7W max

IP protection degree: EN60529 (IP66/IP67)

EAC certification

PART NUMBER

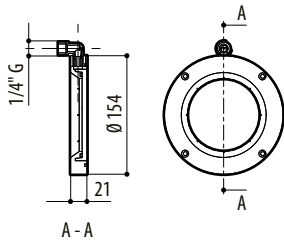
ONXAB2	Air barrier with tempered glass included for NXM and NXW housings
NXFIGRU	Filtering group for compressed air cleaning
VIPNX1C	1.9kg (4.2lb) 14.5x15x27cm (6x6x11in) 15

PACKAGE

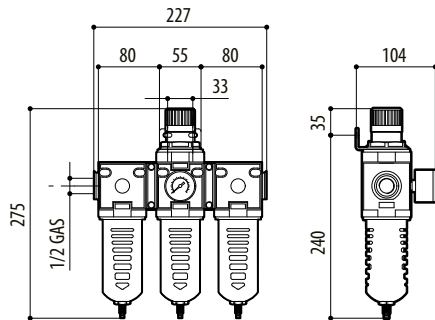
Model Number	Weight	Dimensions (WxHxL)	Master carton
ONXAB2	1.8kg (4lb)	14x25.5x20cm (5.5x10x7.9in)	-
NXFIGRU	3kg (6.6lb)	34.5x24x15.5cm (13.6x9.4x6.1in)	-
VIPNX1C	1.9kg (4.2lb)	14.5x15x27cm (6x6x11in)	15

TECHNICAL DRAWINGS

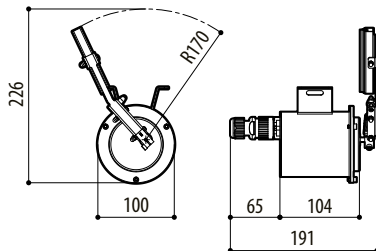
Sizes in millimeters.



ONXAB2



NXFIGRU



VIPNX